

THE NATIONAL SOCIETY OF BLACK ENGINEERS

2023/2024 Corporate
Sponsorship Packet





TABLE OF **CONTENTS**

- 01 WHO ARE WE

- 02 MEET THE TOP 5 2023/2024
EXECUTIVE BOARD

- 03 MISSOURI S&T NSBE
HALLMARK EVENTS

- 04 MISSOURI S&T NSBE CHAPTER
DEVELOPMENT EVENTS

- 05 MISSOURI S&T NSBE CHAPTER
OUTREACH PROGRAMS

- 06 PARTNERSHIP PACKAGE
SPONSOR LEVELS

- 07 LOCAL CHAPTER
SURVEY DATA

WHO ARE WE?

THE NATIONAL SOCIETY OF BLACK ENGINEERS (NSBE) is a prominent nationwide professional society comprised of National, Regional, and Local Chapters, which are accountable for organizing events, collecting statistics, and administering scholarships for the benefit of its members. The Missouri University of Science & Technology (Missouri S&T) Chapter of NSBE is a vibrant, medium-sized organization that plays an active role in the State of Missouri. Notably, we were honored to receive the “National Medium Chapter of the Year” award at the NSBE 49th Annual National Convention, attesting to our chapter’s outstanding performance and dedication to the society’s objectives.

THE MISSOURI S&T NSBE CHAPTER HAS:

3.34

*Average cumulative
GPA*

67%

*Members who
receive scholarships
or grants*

79%

*Members who are
involved in outside
organizations*

29%

*Members who can
speak a second
language*

40%

*Members who had
an internship or
co-op while
attending university*

30%

*Members who
hold on-campus
leadership positions*

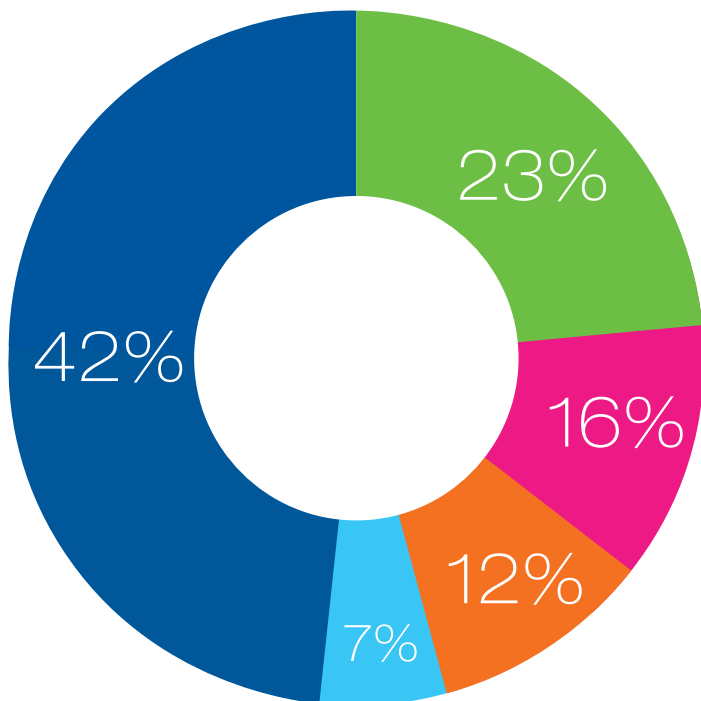
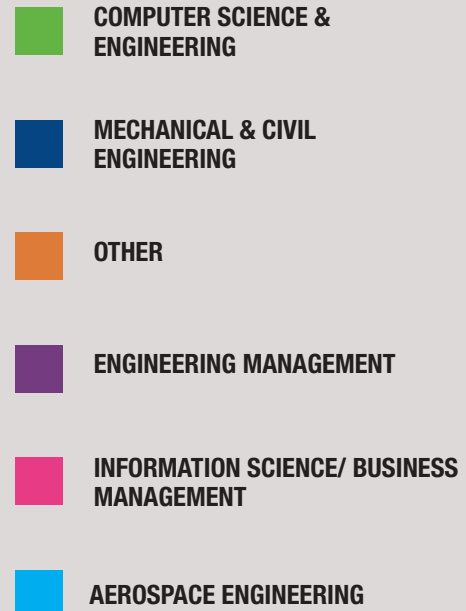
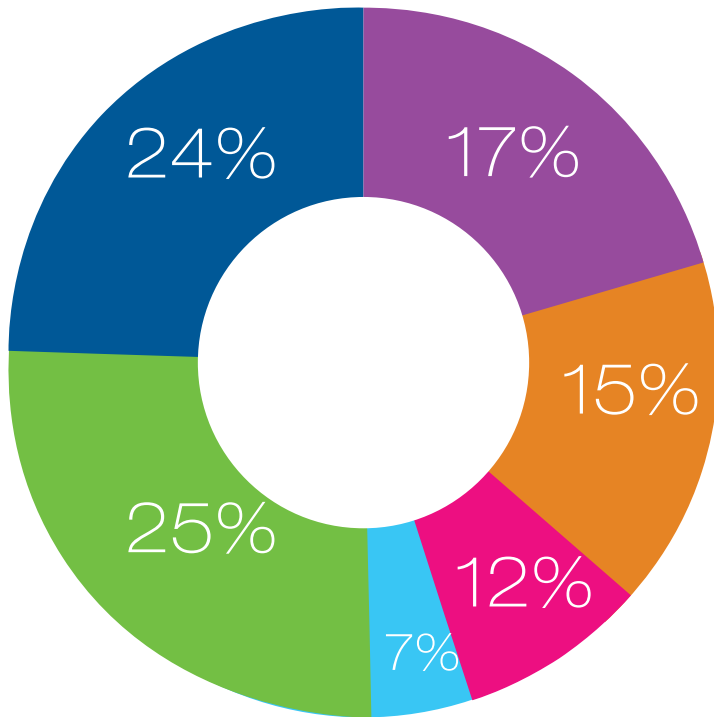
37%

*Members who are
female or non-binary*

14%

*Members who
are international
students*

OUR CHAPTER IS MADE UP OF



MEET THE TOP 5

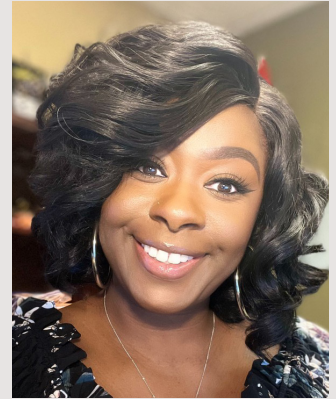
2023/2024 EXECUTIVE BOARD

**XZAVIER RAINEY**

PRESIDENT, SENIOR
Mechanical Engineering

**MOHAMED I. ELSHIEKH**

VICE PRESIDENT, SENIOR
Engineering Management

**SHARI HILL**

CHAPTER ADVISOR,
Assistant Director for
Graduate Recruitment

**CHINONYE OMEIFE**

TREASURER, SOPHMORE
Computer Science

**RODNEY EDDINS**

PROGRAMS CHAIR,
SOPHOMORE
Mechanical & Aerospace

**JERIMIAH HOLMAN**

SECRETARY, SOPHMORE
Electrical Engineering





LETTER FROM THE TREASURER

Dear Prospective Partner,

My name is Chinonye Omeife, and I am currently serving as the chapter treasurer for the NSBE Chapter at the Missouri University of Science and Technology (Missouri S&T). Firstly, I would like to extend my utmost gratitude to you for taking the time out of your day to look over our Corporate Partnership Packet for this year. We here at Missouri S&T NSBE hope that you will help us in embodying our national mission: To increase the number of culturally responsible Black engineers who excel academically, succeed professionally, and positively impact the community.

I am excited to share that our chapter was recently awarded the NSBE National Medium Size Chapter of the Year at the **NSBE 49th annual convention**. This recognition highlights our dedication and outstanding achievements in promoting diversity in STEM fields. As we continue to build on this success, we are seeking partnerships with organizations like yours to further advance our mission.

Our chapter offers opportunities for our members and partners to grow both personally and professionally. This packet will highlight several ways your organization can aid us with programming for the year as well as funding for regional and national conferences. Furthermore, as a partner of our chapter, your generosity will help fund our scholarship program to assist our members throughout their collegiate endeavors.

Benefits that you will experience as a partner of the Missouri S&T NSBE Chapter will include access to a deep talent pool of accomplished minorities in STEM-related fields, as well as opportunities to host events right here on our campus. As a partner of this esteemed chapter, you will have direct contact with our membership and have a significant influence on the success of our chapter.

If you have any questions or concerns regarding the events, their sponsorship, or partnerships in general, please feel free to contact me at crohnr@umsystem.edu or 816-389-9117. On behalf of the Missouri University of Science and Technology, I thank you for your time and consideration. We look forward to working with you for years to come!

Best regards and Go Miners!

Chinonye Omeife

Treasurer 2023-2024

National Society of Black Engineers

Missouri University of Science and Technology crohnr@umsystem.edu

816-389-9117

MISSOURI S&T NSBE

HALLMARK EVENTS

FALL REGIONAL CONFERENCE (FRC) | \$7,500

<i>Description</i>	The Fall Regional Conference is a unique, region-targeted event that is an excellent way for our members network with our regional counterparts as well as experience professional development workshops and find local job opportunities.
<i>Location</i>	New Orleans, LA
<i>Date</i>	November 2023
<i>Reason for Sponsorship</i>	<ol style="list-style-type: none"> 1. Nearly 11% of our annual budget goes towards sponsoring nearly 60% of travel and lodging for 20+ members. 2. Baton Rouge, LA is far from our campus, but our chapter plans on effectively minimizing transportation costs by utilizing ground transportation. 3. Opportunity to sponsor students with travel/ accommodation costs on behalf of the company.

NSBE 50TH ANNUAL NATIONAL CONVENTION | \$19,500

<i>Description</i>	The NSBE NATIONAL CONVENTION is a yearly event that brings together every chapter of NSBE across the country for one event. It brings together students, professionals in engineering, and other STEM fields with representatives from hundreds of corporate, government and academic supporters of NSBE. The convention hosts a Career Fair where top companies and grad schools across the country recruit students for internships, co-ops, graduate programs and full-time opportunities.
<i>Location</i>	Orlando, FL
<i>Date</i>	March 2023
<i>Reason for Sponsorship</i>	<ol style="list-style-type: none"> 1. The National Convention is where the bulk of our budget goes. Here at NSBE, we use our funds to sponsor nearly 60% of travel and lodging to 40+ members so that any financial burdens can be alleviated 2. Opportunity to sponsor students with travel/ accommodation costs on behalf of the company

MISSOURI S&T NSBE

CHAPTER DEVELOPMENT EVENTS

GENERAL BODY MEETINGS | \$2,800

<i>Description</i>	General Body Meetings (GBM) are an opportunity to foster comradery and growth amongst members & officers within our chapter
<i>Occurrence</i>	Weekly Meetings (14 Meetings per semester) starting in August 2023
<i>Reason for Sponsorship</i>	Opportunity for companies to host and present at general body meetings while interacting with membership.

PROFESSIONAL DEVELOPMENT WORKSHOPS | \$2,200

<i>Description</i>	Professional Development Workshops are an opportunity to develop our members professionally, provide valuable information about prospective career paths and give them a first-hand look at strategies or activities to advance student ethical and character development.
<i>Occurrence</i>	6 workshops per semester
<i>Reason for Sponsorship</i>	Companies are welcome to host their own workshops/ information sessions and have a direct connection to our diverse talent pool

STUDY NIGHTS/ACADEMIC BOWLS | \$300

<i>Description</i>	Study nights/ Academic Bowls are events with the purpose to increase the chapter-wide GPA as well as influence significant academic growth across all majors
<i>Occurrence</i>	6-7 Study Nights/ Academic Bowls per semester
<i>Reason for Sponsorship</i>	Opportunity for companies to sponsor an event that enhances the scholastic capabilities of our members

NSBE WEEK | \$1,500

<i>Description</i>	The national Society of Black Engineers (NSBE) Week is a series of events hosted by the Missouri S&T NSBE Chapter. Our goal is to showcase our chapter's capabilities and contributions to the campus community. During the week of October 23rd-October 28th, we will be hosting a variety of events including social, professional, academic, and community service events leading up to our homecoming gala
<i>Occurrence</i>	October 2023
<i>Reason for Sponsorship</i>	Opportunity to have company logo on event flyers and receive recognition on social media platforms

NSBE ANNUAL HOMECOMING GALA | \$3,500

<i>Description</i>	The homecoming Gala is an annual event that takes place during the Fall season offering a unique opportunity for alumni, students, and faculty members to come together and participate in a fundraising dinner. This event serves as a tribute to the outstanding individuals who have contributed to the institution's legacy and provides attendees with an occasion for networking and enjoyable experiences.
<i>Occurrence</i>	October 2023
<i>Reason for Sponsorship</i>	This sponsorship provides recognition as an official sponsor of the year. This sponsorship is also an opportunity to sponsor the banquet and chapter scholarships/ awards for membership. This sponsorship also offers an opportunity to foster networking between Missouri S&T and current students



MISSOURI S&T NSBE

CHAPTER OUTREACH PROGRAMS

PRE-COLLEGE INITIATIVE (PCI) WEEKEND | \$3,000

Description

Pre-College Initiative program takes place during Black History Month and leads the world in enhancing the pre-college students' Academic, Technical and Leadership skills in order to maximize their success in life. Our NSBE chapter by the year 2025 aims to help reach the national NSBE goal of graduation 10,000 African American engineers annually by the year 2025

Reason of Sponsorship

By partnering with NSBE chapter, your funds assist us in organizing events centered around increasing interest in STEM for underprivileged youth in the St. Louis/ Kansas City area. This is also an opportunity to fund the Pre-College Initiative Scholarships that is given to underrepresented incoming freshman pursuing a degree in STEM.

Occurrence

March 2024



PARTNERSHIP PACKAGE

SPONSOR LEVELS

VANGUARD PARTNER | \$7,500

SPONSORSHIP INCENTIVES

- 1) Eligible for Sponsor of the Year Award
- 2) Scholarship to be given out in company's name
- 3) Company logo and website link feature on **ALL** newsletters
- 4) Recognition at Chapter programs and events as a **MAIN SPONSOR**
- 5) **Benefits of PLATINUM, GOLD, SILVER, and BRONZE partnership levels**

PLATINUM PARTNER | \$5,500-\$7,499

SPONSORSHIP INCENTIVES

- 1) Company logo on Chapter t-shirt
- 2) Care package of Missouri S&T NSBE gear
- 3) Feature job openings on NSBE social media to reach larger audience
- 4) Feature job opportunities, information, and ads on **UNLIMITED** weekly newsletters
- 5) **Benefits of GOLD, SILVER, and BRONZE partnership levels**

GOLD PARTNER | \$2,500-\$4,900

SPONSORSHIP INCENTIVES

- 1) Company logo on Chapter Website
- 2) Feature job opportunities, information, and ads on **4** weekly newsletters
- 3) Opportunity to host **ONE** company info session/ **ONE** professional development workshop AND present at **ONE** General Body Meeting
- 4) **Benefits of SILVER, and BRONZE partnership levels**

SILVER PARTNER | \$501-\$2,499

SPONSORSHIP INCENTIVES

- 1) Opportunity to host **ONE** company info session/ **ONE** professional development workshop AND present at **ONE** General Body Meeting
- 2) Feature job openings on **2** weekly newsletters
- 3) **Benefits of BRONZE partnership level**

BRONZE PARTNER | \$500

SPONSORSHIP INCENTIVES

- 1) Opportunity to host ONE professional Development Workshop during the fall or spring semester.
- 2) Invitation to our 4th Annual Homecoming Gala
- 3) Invitation to our Spring Banquet
- 4) Access to Missouri S&T NSBE Chapter resume bank

DISCLAIMER

****Becoming an official partner is not a requirement to collaborate with Missouri S&T NSBE on events/workshops****

LOCAL CHAPTER SURVEY DATA

The Missouri S&T NSBE Chapter has:

Average GPA: 3.34

- Members who receive scholarships or grants: 67%
- Members who are involved in outside organizations: 79%
- Members who had an internship while attending university: 40%
- Members who hold on campus leadership positions: 30%
- Members who are international students 14%

Our Chapter is made up of (Major):

Engineering Management 17%

Computer Science & Engineering 25%

Mechanical & Civil Engineering 24%

Information Science/ Business 12%

Aerospace Engineering 7%

Other 15%

Our Chapter is made up of (Year in School):

1st Year: 42%

2nd Year: 16%

3rd Year: 23%

4th Year: 12%

Graduate Student: 7%

For additional graphical information refer to Section 1; Page 3

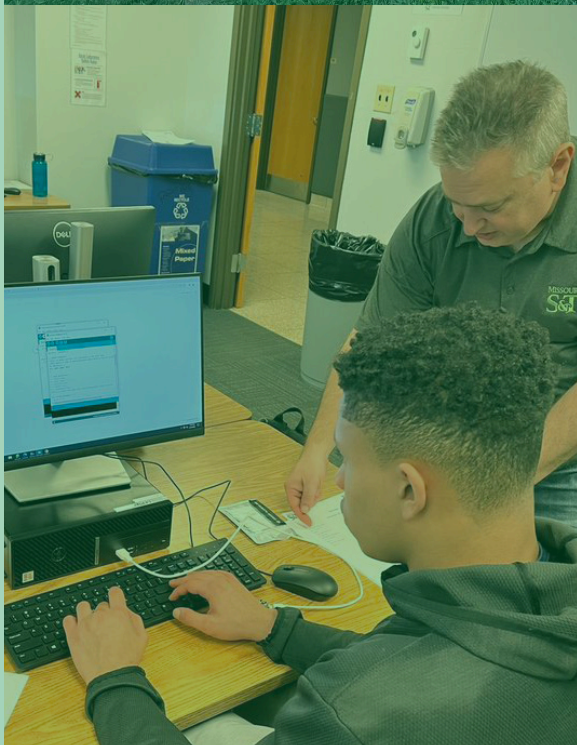
Complete Survey Data for Missouri S&T NSBE Chapter

Has 57% of its members involved in organizations outside of NSBE

- » Society of Hispanic Professional Engineers (SHPE)
- » Society of Petroleum Engineers (SPE)
- » Society of Women Engineers (SWE)
- » American Society of Civil Engineers (ASCE)
- » American Society for Engineering Management (ASEM)
- » First Alumni Association (FAA)
- » Residential Hall Association (RHA)
- » Christian Campus Fellowship (CCF)
- » Joe's PEERS (JPS)
- » Mars Rover Design Team
- » Formula Electric Design Team
- » Women's and Men's Basketball
- » Sigma Nu Fraternity
- » Chi Omega Fraternity
- » African Student Association (ASA)
- » Underwater Robotics
- » International Genetically Engineered Machine (IGEM)
- » Student Athlete Association (SAA)
- » HPV Design Team (HPV)
- » National Society of Leadership and Success (NSLS)
- » PRO Leaders
- » Institute of Electronics and Electrical Engineers (IEE)

37% of members have had an internship/co-op while attending Missouri S&T

- » Clayco
- » Honeywell
- » US Bank
- » Cummins
- » Tesla
- » Textron Aviation
- » Trane
- » TC Energy
- » Ameren
- » Turner Construction
- » Taliaferro & Browne
- » EquipmentShare



CONTACT INFORMATION

SHARI HILL

NSBE Advisor

✉: sdhill@mst.edu

CHINONYE OMEIFE

Treasure

✉: crohnr@mst.edu